

Job Name: _____

Location: _____

Purchaser: _____

Engineer: _____

Submitted To: _____

For: Reference Approval Construction

Submitted By: _____

Date: _____

Unit Designation: _____

Cooling Performance:

Nominal Capacity	19,100 Btu/h
Nominal Sensible Capacity	14,200 Btu/h
EWT Range	40-50°F (5-10°C)
Nominal Flow Rate	4.5 GPM
Nominal Pressure drop	5.5 Ft/Hd

Heating Performance:

Nominal Capacity	20,400 Btu/h
EWT Range	100-125°F (38-52°C)
Nominal Flow Rate	4.5 GPM
Nominal Pressure drop	5.5 Ft/Hd

- Notes:
1. Cooling Capacity is based on 50°F Entering Water Temp and 80°F DB/67°F WB Entering Air Conditions.
 2. Heating Capacity is based on 110°F Entering Water Temp and 70°F DB Entering Air Conditions.
 3. Refer to detailed capacity tables for further information pertaining to the entire entering water temperature range and for flow rates and pressure drop.

Airflow Rate:

Fan Motor Type	PSC
Nominal CFM	600 CFM
Total External Static Pressure	Std: 0.3"WG / Max: 0.5"WG
Blower Speed setting	"Med-Hi" Speed Setting
Motor rating	1/5 HP
Airflow arrangement	
<input type="checkbox"/> Up-flow, <input type="checkbox"/> Horz. Left, <input type="checkbox"/> Horz. Right (Possible)	

Electrical Data:

Power supply	120V / 1PH / 60Hz
Min. Circuit Amps (MCA)	3.75 AMP
Max. overcurrent protection (MOP)	15 AMP

Physical Data:

Dimension (H x W x D)	40"x20"x20"
Weight	115 lbs
Insulation type / R-Rating	1/2"JM TUF-SKIN
Installation Clearances: U.L. Listed for installation with Zero inches Clearance to Combustible materials	

Connection type

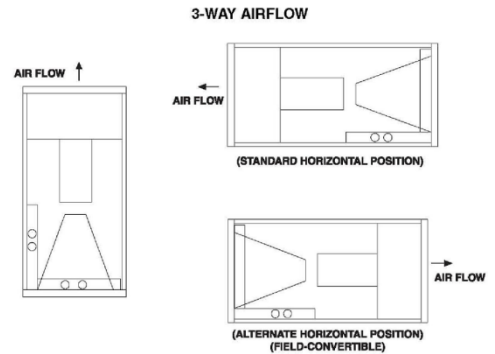
Inlet / Outlet Connections	3/4"(Nominal)
Connection Type	Sweat
Drain Connections	3/4"(M) NPT

Feature:

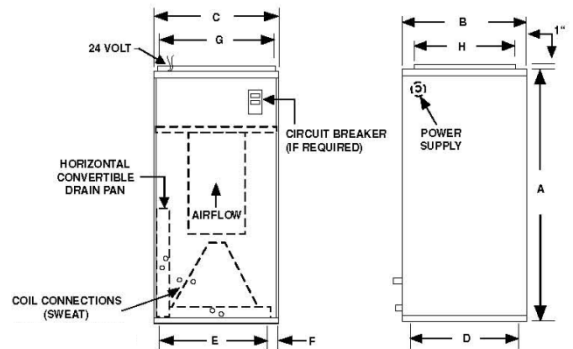
Air Filter (MERV 8 Throwaway)	18"x20"x1"
-------------------------------	------------



Airflow arrangement



Physical Dimensions



A	B	C	D	E	F	G	H	FILTER SIZE
40	20	20	18-1/2	16	2	18	16	18x20x1